

Power Inductor

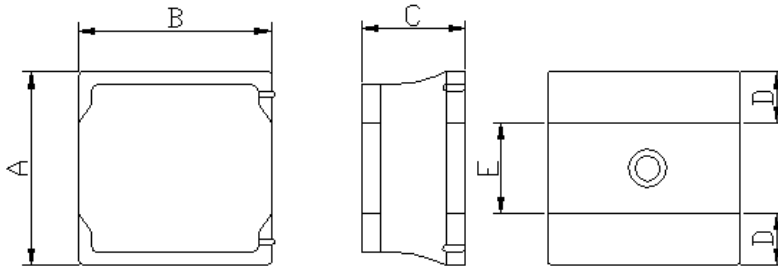
HPC3010TV-SERIES

1. Features

1. This specification applies Low Profile Power Inductors.
2. 100% Lead(Pb) & Halogen-Free and RoHS compliant.
3. High reliability -Reliability tests comply with AEC-Q200
4. Operating temperature:-55~+125°C (Including self - temperature rise)

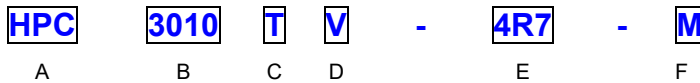


2. Dimension



Series	A(mm)	B(mm)	C(mm)	D(mm)	E(mm)
HPC3010TV	3.0±0.2	3.0±0.2	1.0max.	1.0 ref.	1.0 ref.

3. Part Numbering



- A: Series
- B: Dimension
- C: Lead Free
- D: Category Code
 - V=Vehicle
- E: Inductance
 - 4R7=4.70uH
- F: Inductance Tolerance
 - M=±20%;Y=±30%

4. Specification

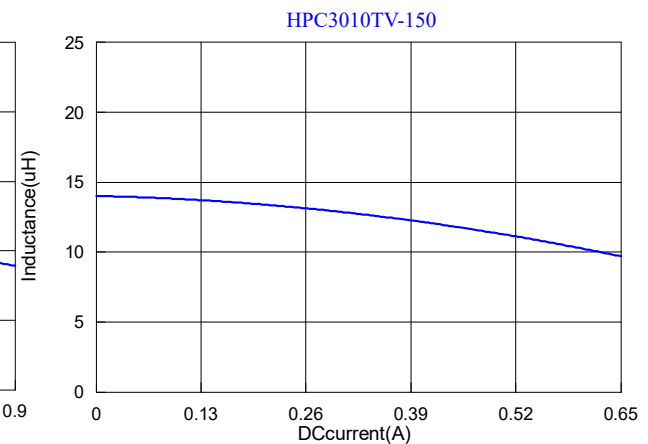
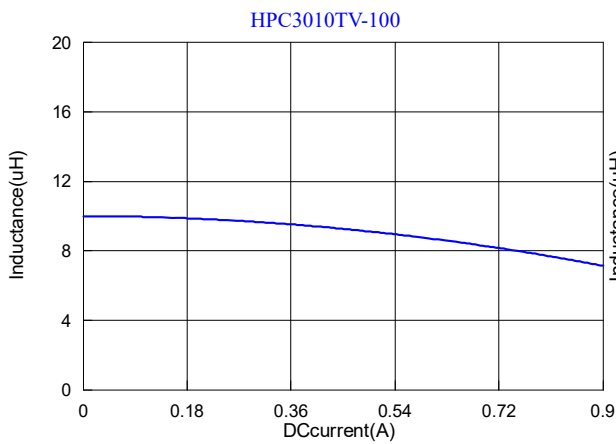
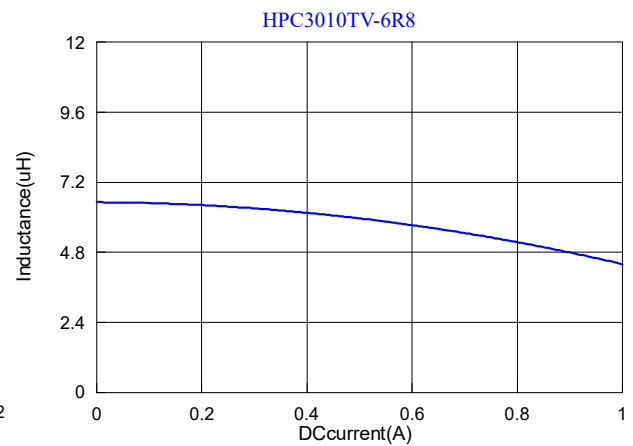
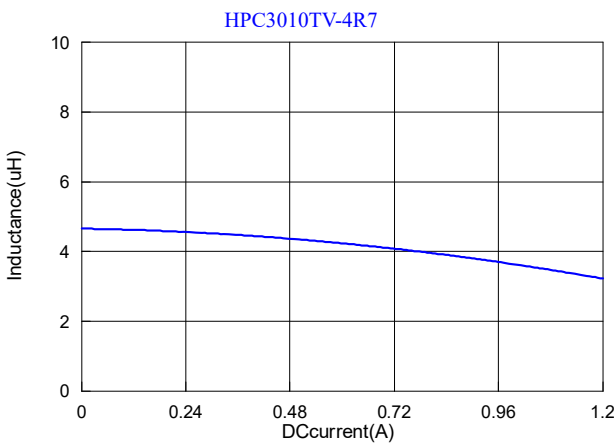
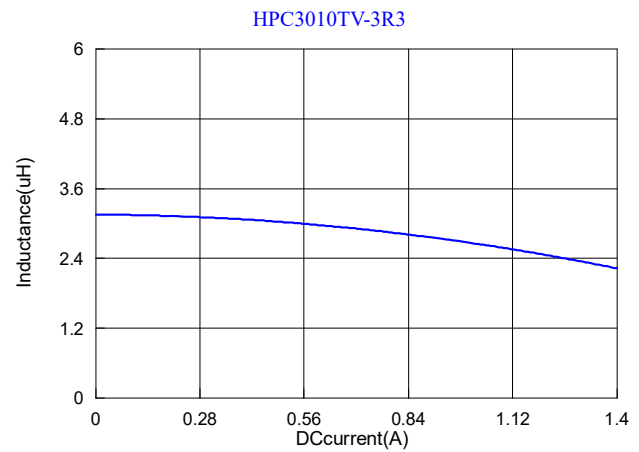
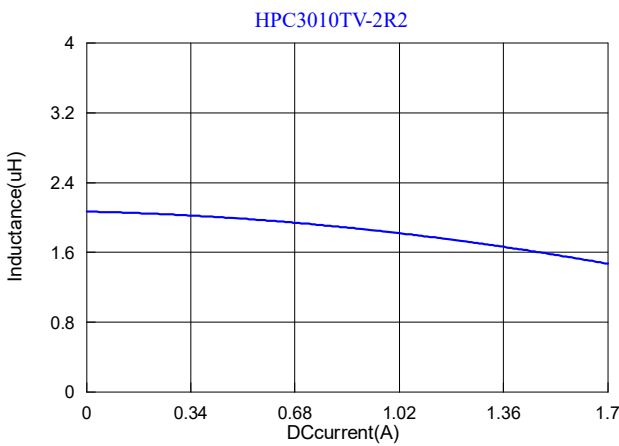
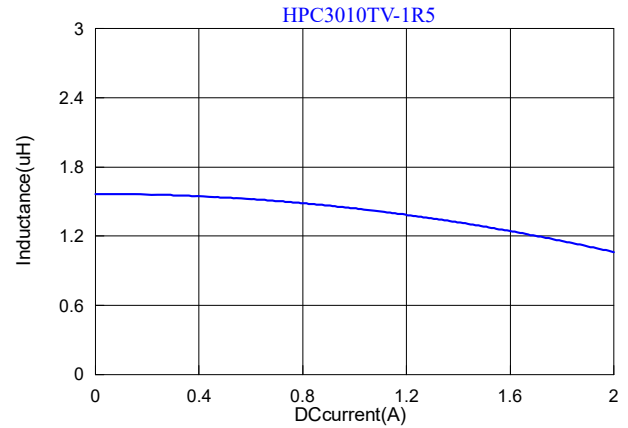
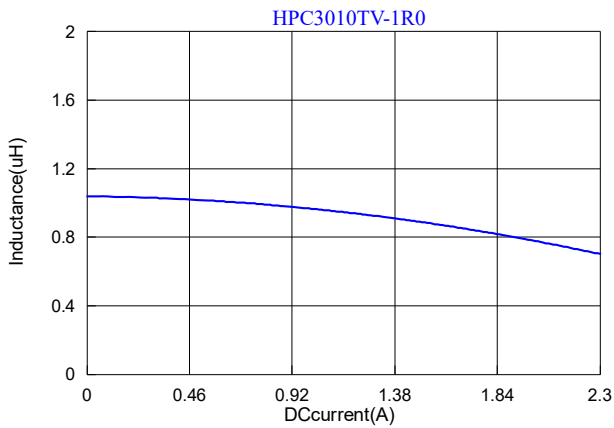
TAI-TECH Part Number	Inductance (uH)	Tolerance (%)	Test Frequency (Hz)	DCR (Ω)Typ	DCR (Ω) Max	I sat (A) typ.	I sat (A) max.	I rms (A) typ.	I rms (A) max.
HPC3010TV-1R0Y	1.00	±30%	0.1V/1M	0.060	0.066	2.20	1.80	2.50	2.10
HPC3010TV-1R5Y	1.50	±30%	0.1V/1M	0.070	0.084	2.00	1.50	2.20	1.90
HPC3010TV-2R2M	2.20	±20%	0.1V/1M	0.090	0.108	1.60	1.30	2.10	1.70
HPC3010TV-3R3M	3.30	±20%	0.1V/1M	0.130	0.156	1.30	1.10	1.70	1.50
HPC3010TV-4R7M	4.70	±20%	0.1V/1M	0.190	0.204	1.20	0.90	1.50	1.30
HPC3010TV-6R8M	6.80	±20%	0.1V/1M	0.280	0.312	0.90	0.77	1.30	1.00
HPC3010TV-100M	10.0	±20%	0.1V/1M	0.370	0.420	0.75	0.63	1.00	0.80
HPC3010TV-150M	15.0	±20%	0.1V/1M	0.555	0.612	0.65	0.54	0.80	0.70
HPC3010TV-220M	22.0	±20%	0.1V/1M	0.780	0.900	0.55	0.43	0.75	0.60

Note:

I_{sat} : Saturation Current (I_{sat}) will cause L0 to drop approximately 30%.

I_{rms} : Heat Rated Current (I_{rms}) will cause the coil temperature rise approximately ΔT of 40°C

9. Typical Performance Curves



HPC3010TV-220

