

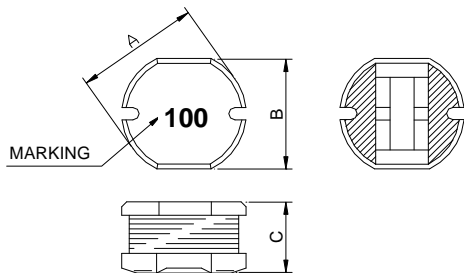
**SMD Type Power Inductor** **FPI0403BMV-Series**

**1. Features**

1. Excellent solderability and high heat resistance.
2. Excellent terminal strength construction.
3. Packed in embossed carrier tape and can be used by automatic mounting machine.
4. 100% Lead(Pb) & Halogen-Free and RoHS compliant.
5. High reliability -Reliability test meet AEC-Q200.
6. Operating temperature:-55~+125°C (Including self - temperature rise)



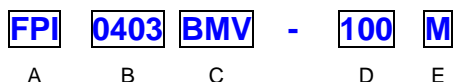
**2. Dimensions**



Size	A	B	C
FPI 0403	4.50±0.3	4.00±0.3	3.20±0.3

Units: mm

**3. Part Numbering**



- A: Series
- B: Dimension
- C: Lead free type                      Black marking V=Vehicle
- D: Inductance                              100=10uH
- E: Inductance Tolerance                      M=±20%

## 4. Specification

TAI-TECH Part Number	Inductance ( $\mu$ H)	Tolerance (%)	Test Frequency (Hz)	DCR ( $\Omega$ ) max.	IDC (A) max.
FPI 0403BMV-1R0M	1.0	$\pm 20\%$	1V/7.96M	0.03	4.00
FPI 0403BMV-1R4M	1.4	$\pm 20\%$	1V/7.96M	0.04	3.50
FPI 0403BMV-1R8M	1.8	$\pm 20\%$	1V/7.96M	0.05	3.00
FPI 0403BMV-2R2M	2.2	$\pm 20\%$	1V/7.96M	0.06	2.60
FPI 0403BMV-2R7M	2.7	$\pm 20\%$	1V/7.96M	0.06	2.20
FPI 0403BMV-3R3M	3.3	$\pm 20\%$	1V/7.96M	0.07	2.00
FPI 0403BMV-3R9M	3.9	$\pm 20\%$	1V/7.96M	0.07	2.00
FPI 0403BMV-4R7M	4.7	$\pm 20\%$	1V/7.96M	0.08	1.90
FPI 0403BMV-5R6M	5.6	$\pm 20\%$	1V/7.96M	0.12	1.80
FPI 0403BMV-6R8M	6.8	$\pm 20\%$	1V/7.96M	0.14	1.60
FPI 0403BMV-8R2M	8.2	$\pm 20\%$	1V/7.96M	0.15	1.40
FPI 0403BMV-100M	10	$\pm 20\%$	1V/2.52M	0.19	1.10
FPI 0403BMV-120M	12	$\pm 20\%$	1V/2.52M	0.21	1.10
FPI 0403BMV-150M	15	$\pm 20\%$	1V/2.52M	0.25	1.00
FPI 0403BMV-180M	18	$\pm 20\%$	1V/2.52M	0.30	1.00
FPI 0403BMV-220M	22	$\pm 20\%$	1V/2.52M	0.35	1.00
FPI 0403BMV-270M	27	$\pm 20\%$	1V/2.52M	0.45	0.75
FPI 0403BMV-330M	33	$\pm 20\%$	1V/2.52M	0.60	0.70
FPI 0403BMV-390M	39	$\pm 20\%$	1V/2.52M	0.70	0.65
FPI 0403BMV-470M	47	$\pm 20\%$	1V/2.52M	0.80	0.60
FPI 0403BMV-560M	56	$\pm 20\%$	1V/2.52M	0.85	0.55
FPI 0403BMV-680M	68	$\pm 20\%$	1V/2.52M	1.00	0.50
FPI 0403BMV-820M	82	$\pm 20\%$	1V/2.52M	1.10	0.46
FPI 0403BMV-101M	100	$\pm 20\%$	1V/1K	1.20	0.22
FPI 0403BMV-121M	120	$\pm 20\%$	1V/1K	1.60	0.20
FPI 0403BMV-151M	150	$\pm 20\%$	1V/1K	2.00	0.20
FPI 0403BMV-181M	180	$\pm 20\%$	1V/1K	3.00	0.20
FPI 0403BMV-221M	220	$\pm 20\%$	1V/1K	3.00	0.20
FPI 0403BMV-271M	270	$\pm 20\%$	1V/1K	4.00	0.16
FPI 0403BMV-331M	330	$\pm 20\%$	1V/1K	4.00	0.14
FPI 0403BMV-391M	390	$\pm 20\%$	1V/1K	5.00	0.12
FPI 0403BMV-471M	470	$\pm 20\%$	1V/1K	6.00	0.12
FPI 0403BMV-561M	560	$\pm 20\%$	1V/1K	7.00	0.10

Note:

Based on inductance change ( $\Delta L/L0$  : 35%) @ ambient temp. 25°C

Based on temperature rise ( $\Delta T$  : 40°C typ. )