

LAN Transformer Module

LAN-12M162/165_P-SERIES

1. Features

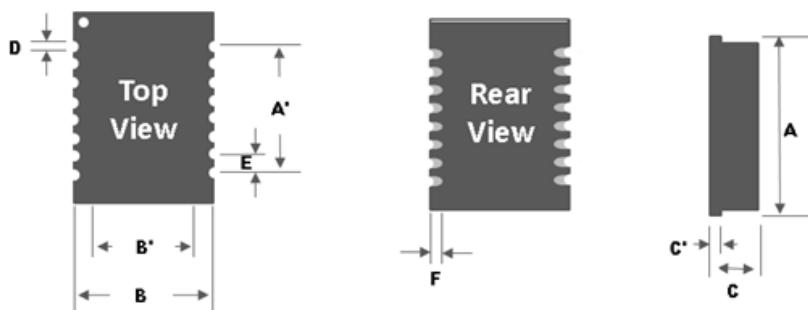
1. Designed to meet IEEE802.3u requirement
2. Lead-Free & Designed to meet RoHS requirement
3. Designed to meet IR 255°C peak Requirement.
4. 4mm Profile package
5. Operating temperature range: -40 °C to +85°C
6. Storage temperature range: -40 °C to +85 °C
7. 100% Lead(Pb) & Halogen-Free and RoHS compliant.



2. Applications

10/100 Base-T, Single Port,

3. Dimensions



Series	A(mm)	A'(mm)	B(mm)	B'(mm)	C(mm)	C'(mm)	D(mm)	E(mm)	F(mm)
LAN-12M162P7A8	12.7±0.25	8.89±0.25	8.67±0.25	7.2±0.25	4.0±0.25	0.8±0.05	0.6±0.1	1.27±0.25	1.00±0.25
LAN-12M162P7B0	12.7±0.25	8.89±0.25	8.67±0.25	7.2±0.25	4.0±0.25	0.8±0.05	0.6±0.1	1.27±0.25	1.00±0.25
LAN-12M162P7D8	12.7±0.25	8.89±0.25	8.67±0.25	7.2±0.25	4.0±0.25	0.8±0.05	0.6±0.1	1.27±0.25	1.00±0.25
LAN-12M165P7A8	12.7±0.25	8.89±0.25	8.67±0.25	7.2±0.25	4.0±0.25	0.8±0.05	0.6±0.1	1.27±0.25	1.00±0.25

4. Part Numbering

LAN - 12 M 16 2 P7 A8

A B C D E F G

A: Series C: Application E: Center tab G: Special
 B: Dimensions D: Pin F: Pitch

LAN Transformer Module **LAN-12M162/165_P-SERIES**

5. Specification

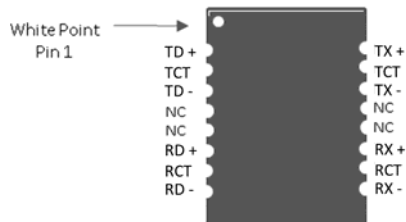
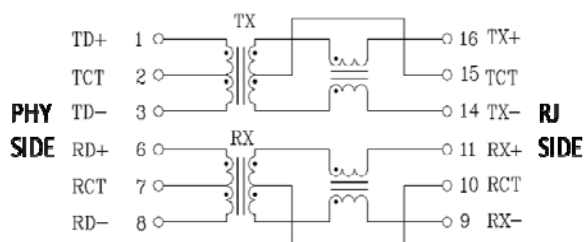
Part Number	Insertion Loss (dB Max)	Return Loss (dB min)				Cross talk (db min)	DCMR(dB Min)	
		1~100Mhz	1~30Mhz	40Mhz	50Mhz		60~80Mhz	1~60Mhz
LAN-12M162P7A8	-1.2	-18	-15.5	-13.5	-10	-38	-33	-26
LAN-12M162P7B0	-1.2	-18	-15.5	-13.5	-10	-38	-33	-26
LAN-12M162P7D8	-1.2	-18	-15.5	-13.5	-10	-38	-33	-26
LAN-12M165P7A8	-1.2	-18	-15.5	-13.5	-10	-38	-33	-26

Note:

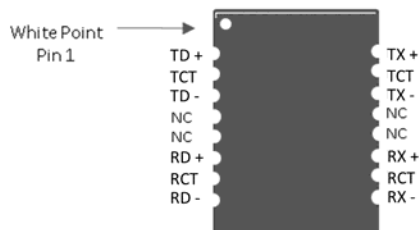
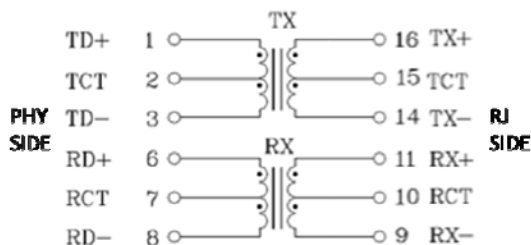
- 1.All test data referenced to 25°C ambient
- 2.Hi-Pot resistance of 1500 VAC for 1 minute

6. Schematic and Pin Define

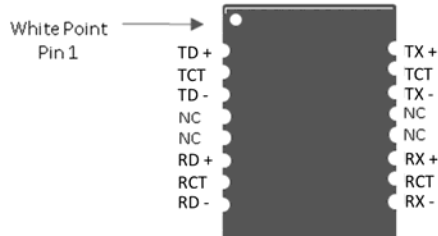
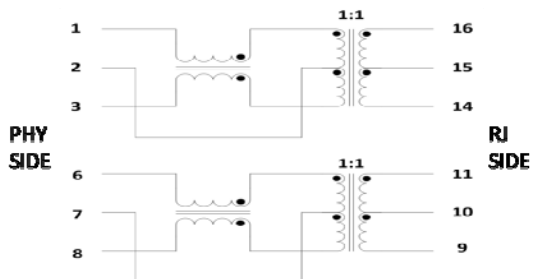
LAN-12M162P7A8



LAN-12M162P7B0



LAN-12M162P7D8



LAN-12M165P7A8

